

# Welcome to the Lewis & Clark County Small Acreage Informational Forum



USDA Natural Resources Conservation Service



Lewis & Clark County Weed District



Lewis & Clark County  
Water Quality Protection District



Lewis & Clark Conservation District



# Who is NRCS?

- An Agency under the US Department of Agriculture
  - Services are free and voluntary

# What does NRCS do? -

- Provide Technical Assistance to Private Landowners on Natural Resources Questions/Concerns.
- Can provide financial assistance



# Land Uses NRCS Works In

- Range/Pasture
- Forest
- Cropland (both irrigated & dryland)

# Range/Pasture





# Forestry

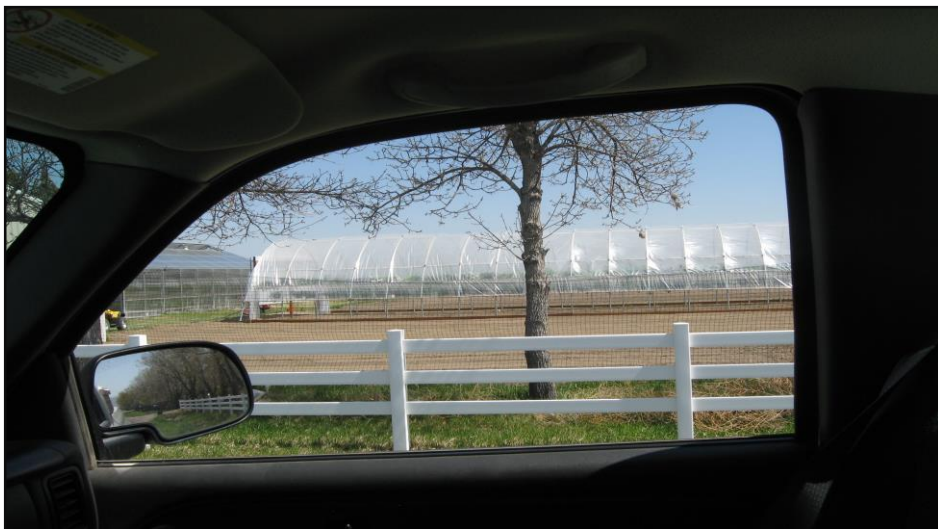






United States Department of Agriculture

# Small Acreage





For more information, visit the Natural  
Resources Conservation Service Montana  
website: [www.nrcs.usda.gov](http://www.nrcs.usda.gov)  
**NRCS office – 790 Colleen St.**  
**Or Call 406 449 5000 x 3**

USDA is an equal opportunity provider, employer, and lender.



# LEWIS AND CLARK COUNTY WEED DISTRICT



## NOXIOUS WEED MANAGEMENT BENEFITS THE ENVIRONMENT



# **MANAGEMENT SUPPORT**

## **WEED DISTRICT RESPONSIBILITY**

Home/Property Site Visits

Noxious Weed Identification

Biological/Pesticides/Other Methods

Rental Equipment

Grants

Pesticide Container Recycling

Plant Identification

Producer/Community Projects

Planning and Enforcement

County Road Rights of Way

Area Representative-Board

Agency Coordination-County, State and Federal

Prevention and Education

# MANAGEMENT SUPPORT

## LANDOWNER RESPONSIBILITY

- \*Know Your Property--Weed Inventory
  - \*Awareness of Noxious Weeds
    - \*Awareness of Neighbors
  - \*Get Involved in Community Management



# RESPONSIBILITY OF COUNTY AND PROPERTY OWNERS

## NOXIOUS WEED COMPLIANCE FOR LANDOWNERS STATE OF MONTANA – COUNTY NOXIOUS WEED CONTROL ACT – TITLE 7, CHAPTER 22

7-22-2115. Noxious weeds and seeds declared nuisance. Noxious weeds and the seed of any noxious weed are hereby declared a common nuisance.

7-22-2116. Unlawful to permit noxious weeds to propagate. It is unlawful for any person to permit any noxious weed to propagate or go to seed on a person's land...

# METHODS FOR NOXIOUS WEED MANAGEMENT

- CULTURAL – Pulling, burning, plowing, etc.
- BIOLOGICAL – Insects for sensitive areas or for a long term management
- HERBICIDES – Chemicals suitable for the area, noxious weed risk, and environmental concerns
- COMBINATION – Use two or more to manage noxious weeds on your property

**LEWIS AND CLARK COUNTY  
WEED DISTRICT  
INFORMATION AND OPERATIONS**

**HAVE A QUESTION OR NEED ADDITIONAL  
INFORMATION?**

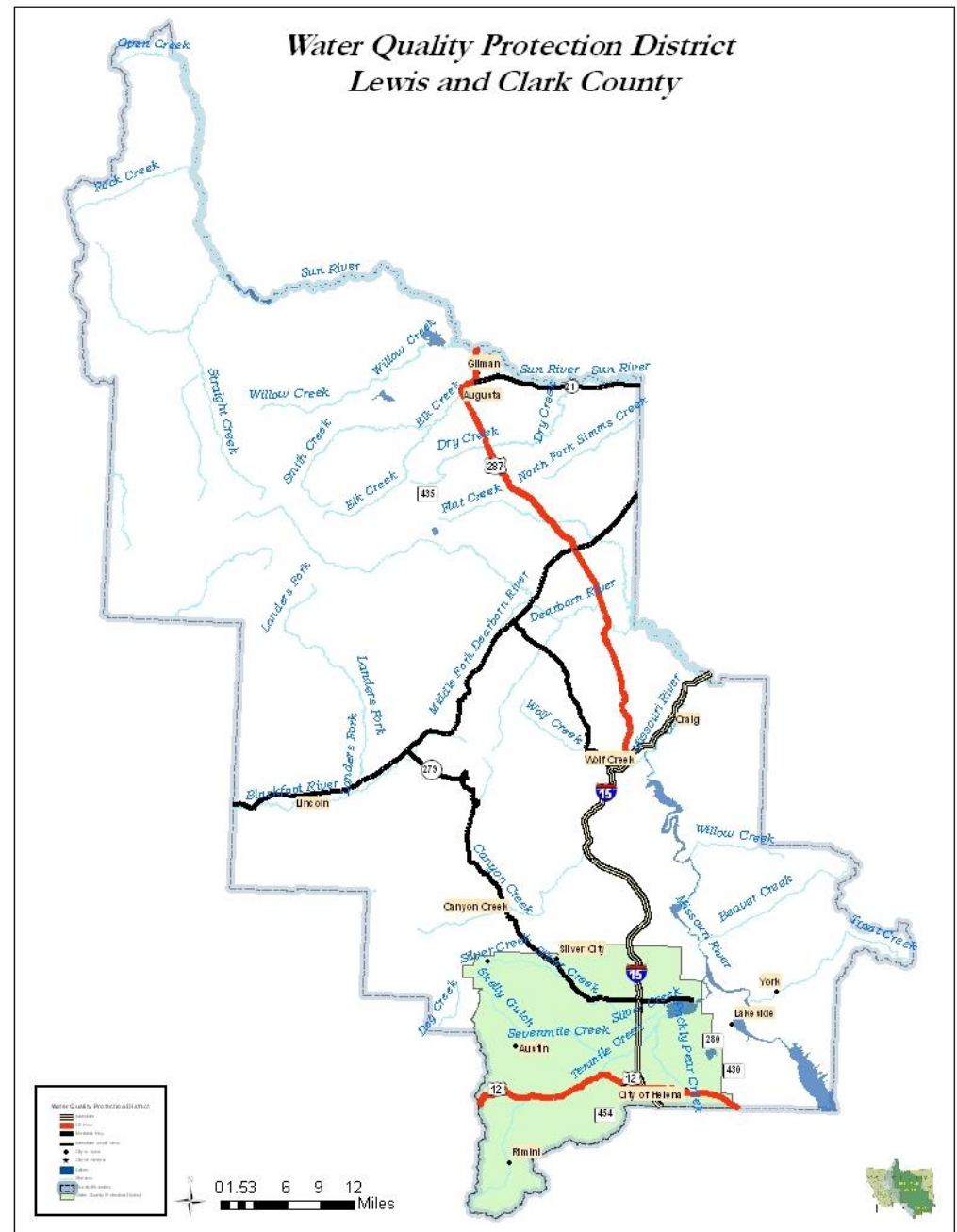
**CONTACT: 406-447-8372**

**OFFICE: 3402 COONEY DRIVE - HELENA**



# Water Resources

## Lewis & Clark County Water Quality Protection District

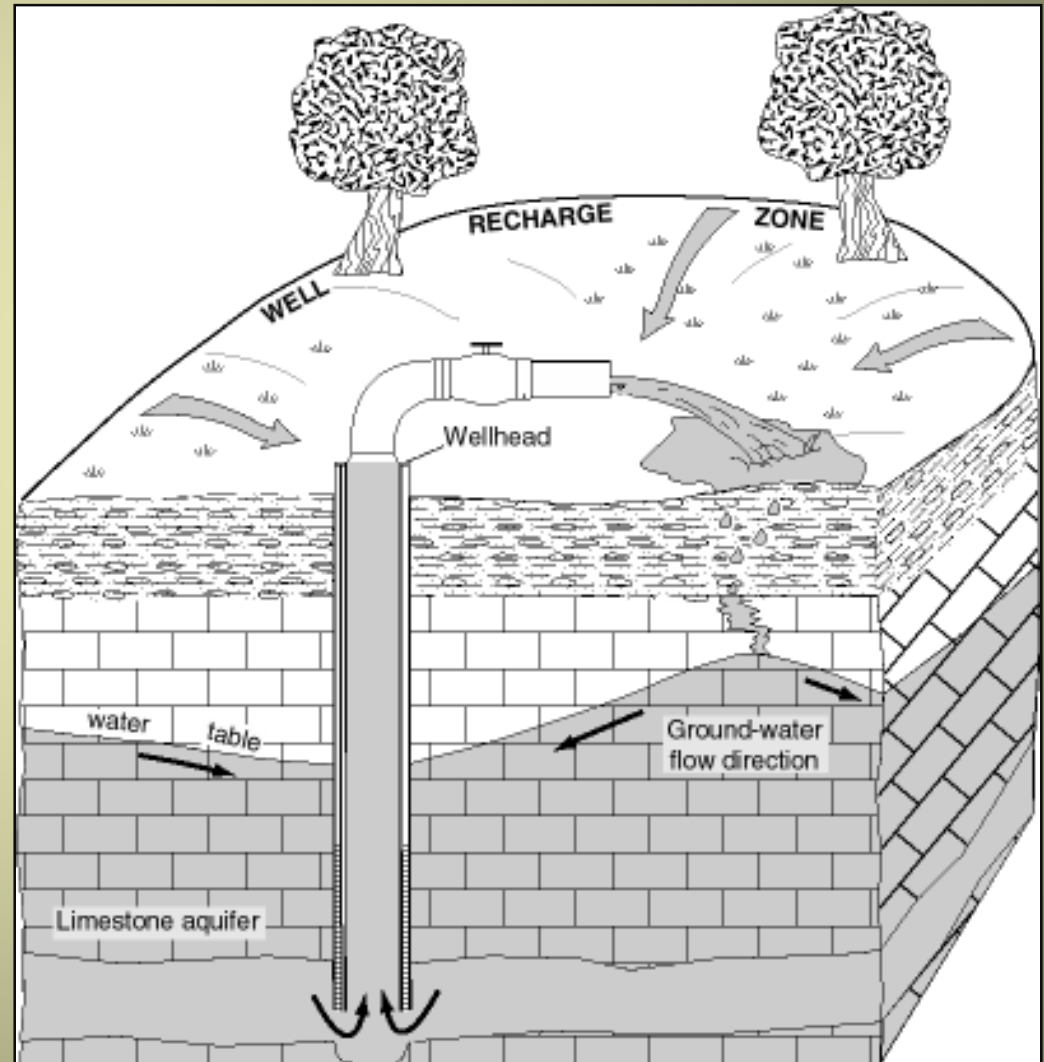


# Water Quality Protection District

- Groundwater & surface water studies
- Stream restoration work
- Assist homeowners with water quality issues



# Why protect water?



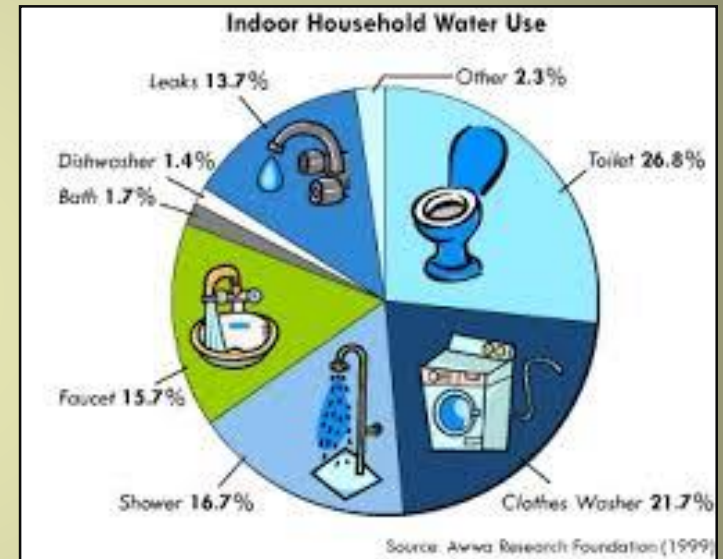


# What are our water resources?

They are sources of water that are potentially useful

Uses of water include:

Agricultural, industrial, household, recreational and environmental activities.



## Industrial water needs:

- As a solvent
- Non processes use like cooling, washing of machine, staff needs
- Paper industry needs 200-400 kl/ton while petroleum needs 1-2kl/ton

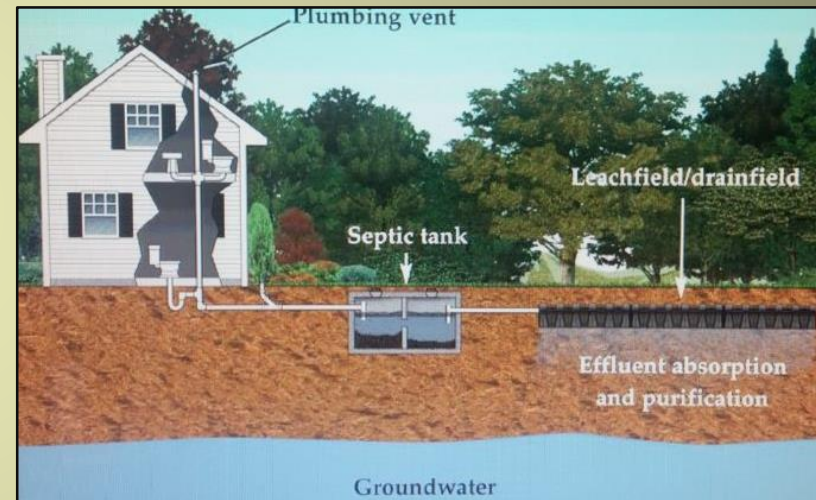


## Thermal and nuclear power generation:

- To produce steam, for cooling
- 200-250lit water used in 1 kilowatt power generation

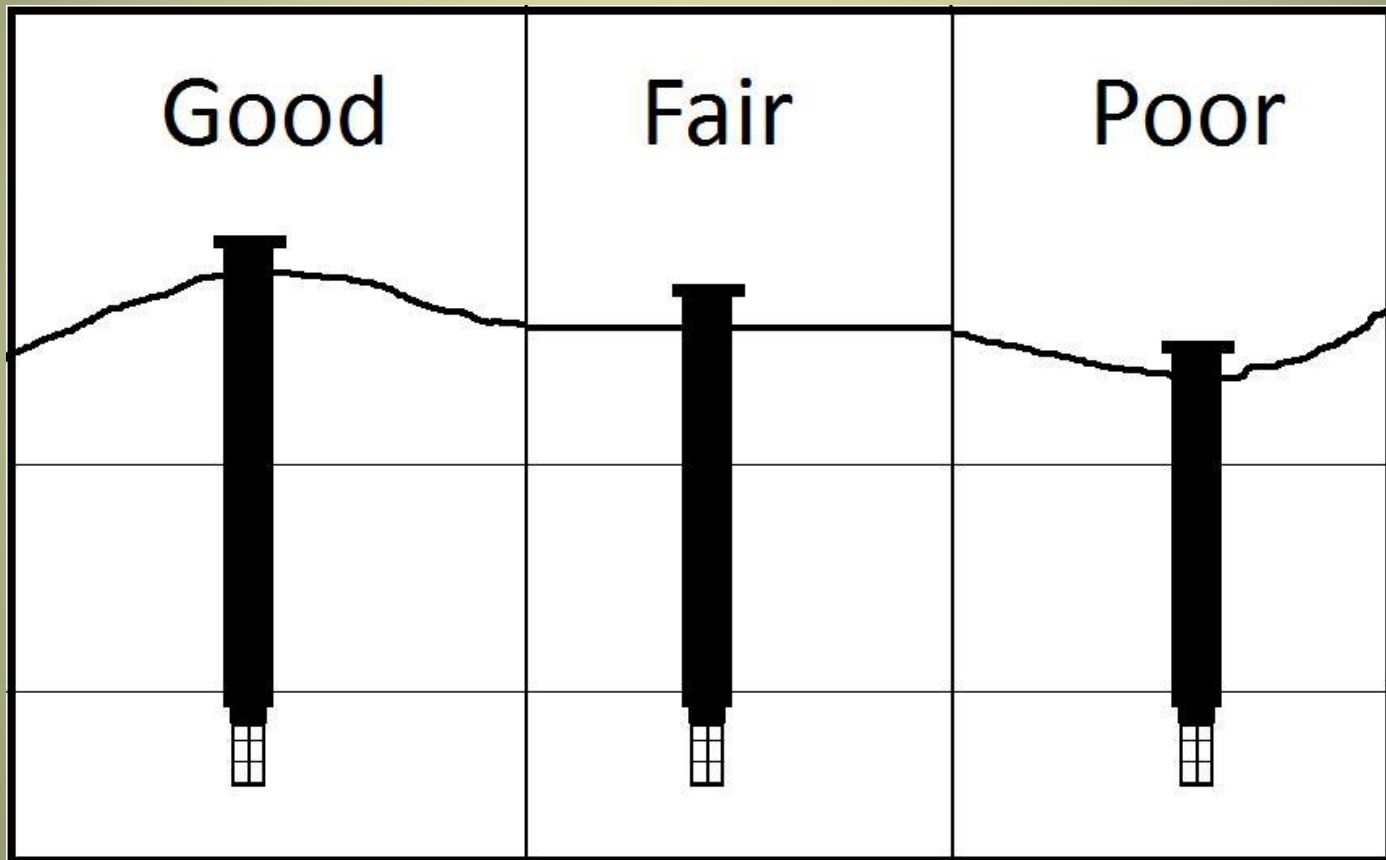


# Water Quality Concerns





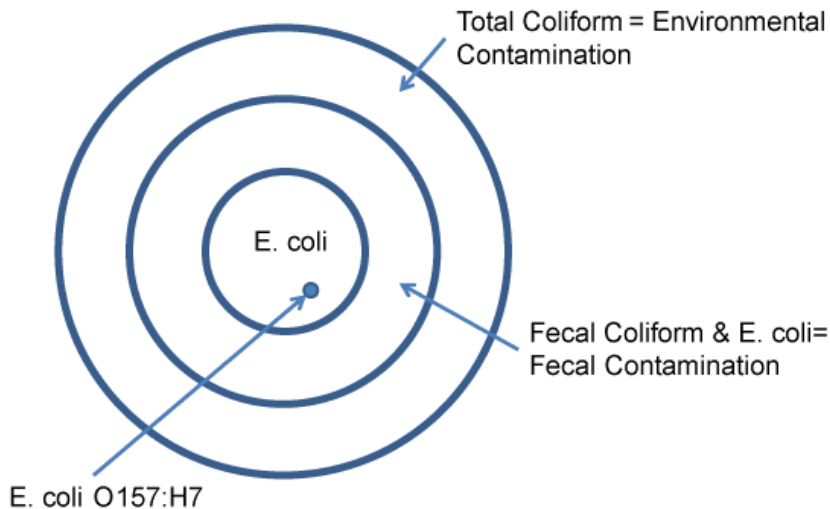
# Wellhead protection



# What are coliforms?

“indicators”

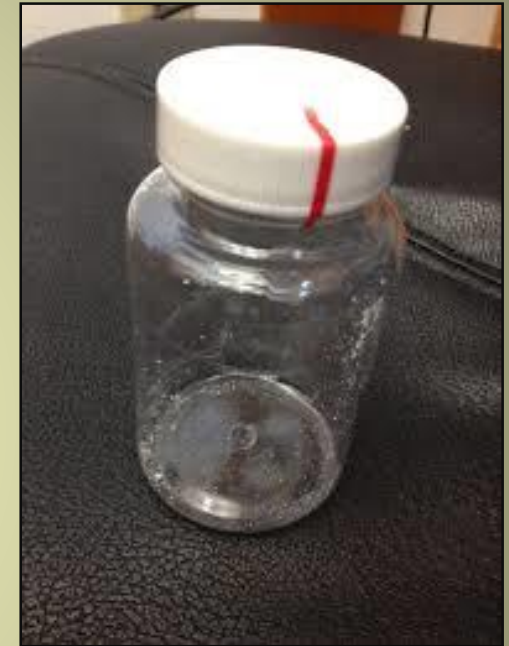
## Total Coliform, Fecal Coliform and E. coli



Coliforms are bacteria that are always present in the digestive tracts of animals, including humans and are found in their wastes. Also found in plant and soil material.



# Wellhead protection



Test annually for  
bacteria (coliform  
+*E.coli*)





# Any Questions?

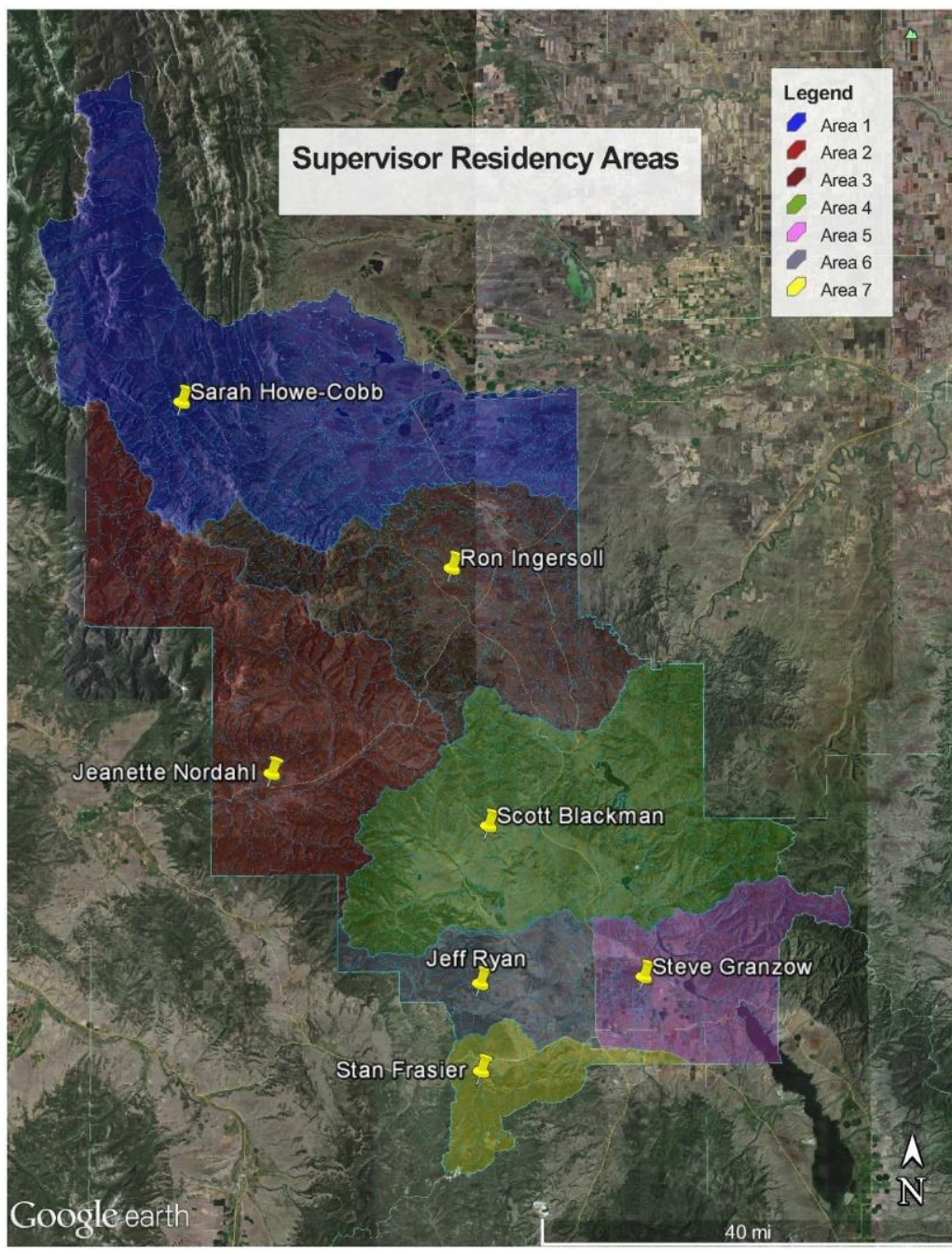
Water Quality Protection District  
457-8584

10/30/2014 14:50





# Area of Coverage



The Lewis & Clark Conservation District (CD) follows county boundaries but does not include the 1948 boundaries of Helena and East Helena. The District has a board of 7 elected volunteer supervisors.



**The CD's mission is to provide  
leadership in the conservation and  
wise use of Soil, Water and Related  
Resources**

**Most CD funding comes from a county mill  
levy. Additional funding can come from  
grants. The annual budget includes:**

- Youth education including camps, outdoor classrooms, sponsorships for Envirothon**
- Adult education including seminars and workshops, newsletter, website and facebook**
- Projects as directed by board**

# Stream Permitting





# Education Programs

- Youth Ed
- Adult Ed
- Newsletter
- Website
- Facebook Page





# Other Programs

- Wild flower Seed
- Weed Cost Share Program
- Practices Cost Share Program
- Grant sponsorships for entities whose projects fall within our Annual Plan
- Collaboration on projects with partners
- Technical assistance





## Contact Information

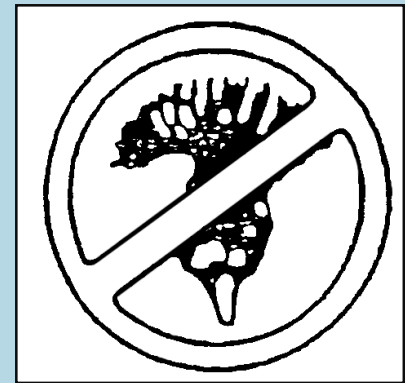
For more information on CD projects, annual plan, budget, meeting information and anything else, check out the District website or call. If they don't know the answer, they can likely find someone who does!

Website: [www.lccd.mt.nacdnet.org](http://www.lccd.mt.nacdnet.org)

Facebook: lewisandclarkcd

Phone: 406-449-5000 ext. 5

Email: [lccd@mt.net](mailto:lccd@mt.net)



Thanks for watching!

